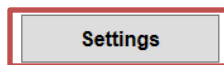
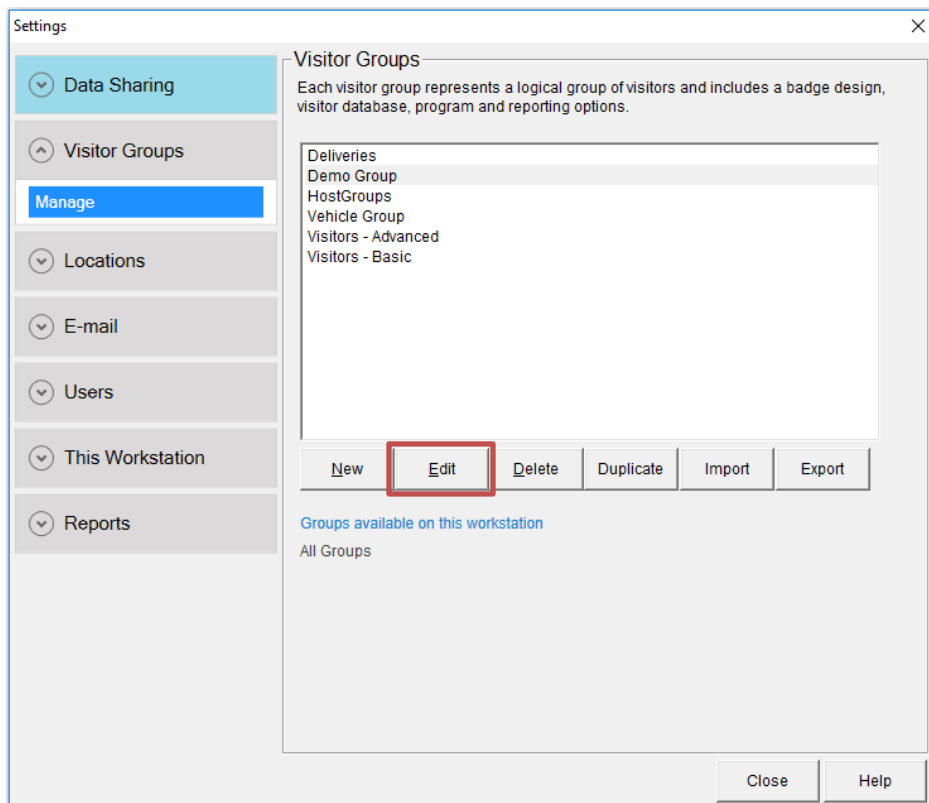


# SHI C-CURE 800 Access Control System Setup

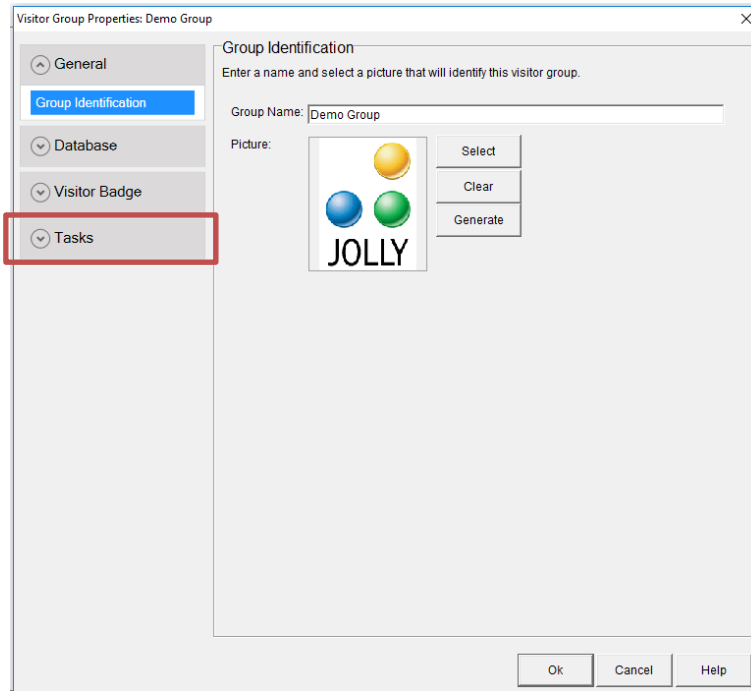
## 1. Open Settings



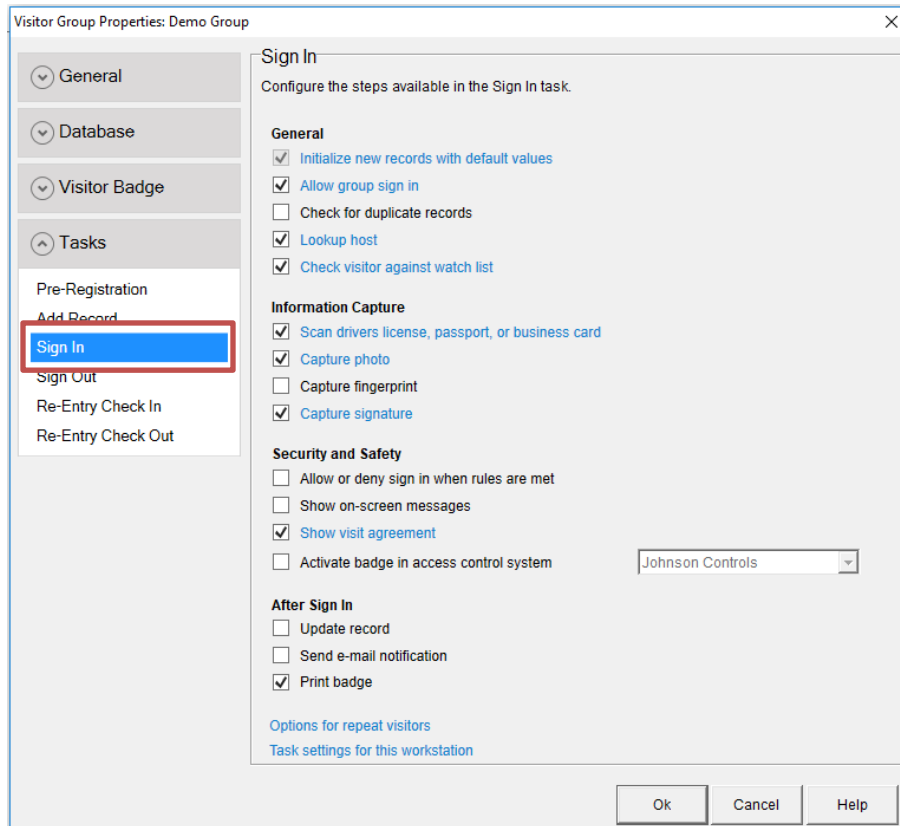
## 2. Select your Visitor Group and select Edit



### 3. Select Tasks



### 4. Select the Sign In task



5. Select 'Activate badge in access control system' and select SHI C-CURE 800 from the drop-down list

Re-Entry Check Out

**Security and Safety**

- Allow or deny sign in when rules are met
- Show on-screen messages
- Show visit agreement
- Activate badge in access control system SHI C-CURE 800

**After Sign In**

- Update record
- Send e-mail notification
- Print badge

[Options for repeat visitors](#)

[Task settings for this workstation](#)

Ok Cancel Help

6. Select the blue link to edit access control settings

Re-Entry Check Out

**Security and Safety**

- Allow or deny sign in when rules are met
- Show on-screen messages
- Show visit agreement
- Activate badge in access control system SHI C-CURE 800

**After Sign In**

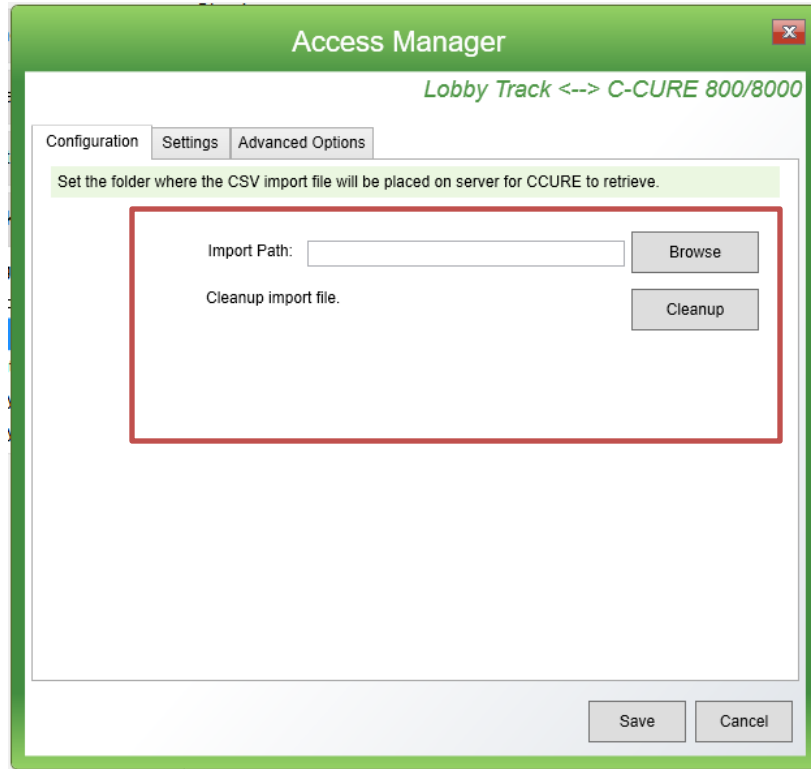
- Update record
- Send e-mail notification
- Print badge

[Options for repeat visitors](#)

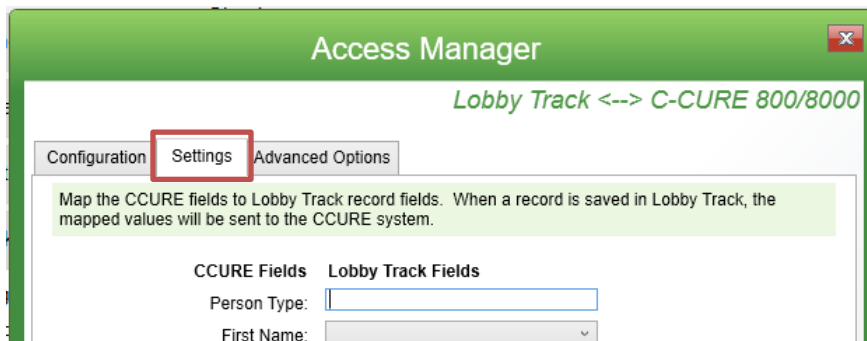
[Task settings for this workstation](#)

Ok Cancel Help

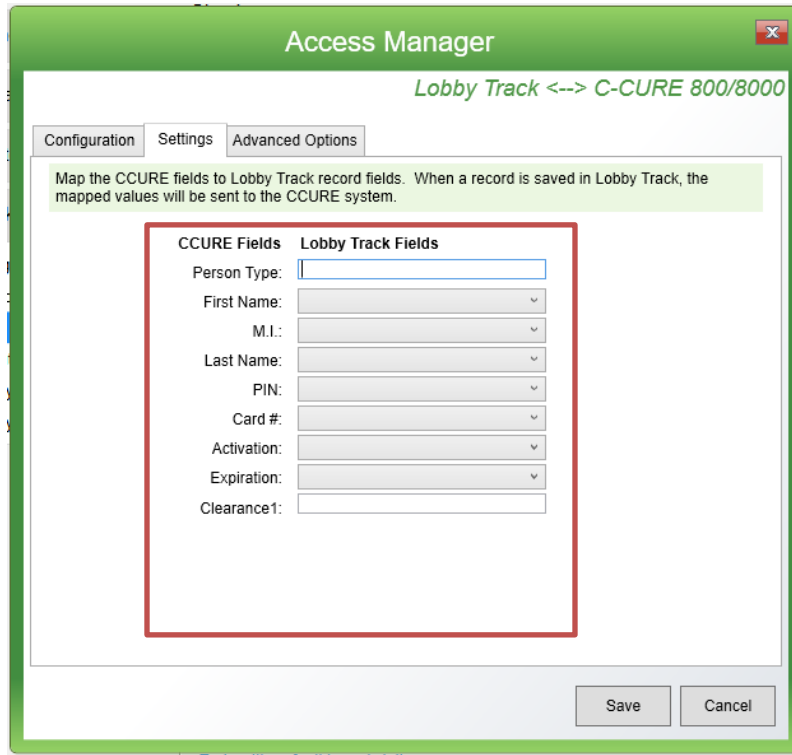
7. Configure the software by referencing the settings retrieved from your SHI C-CURE 800 system



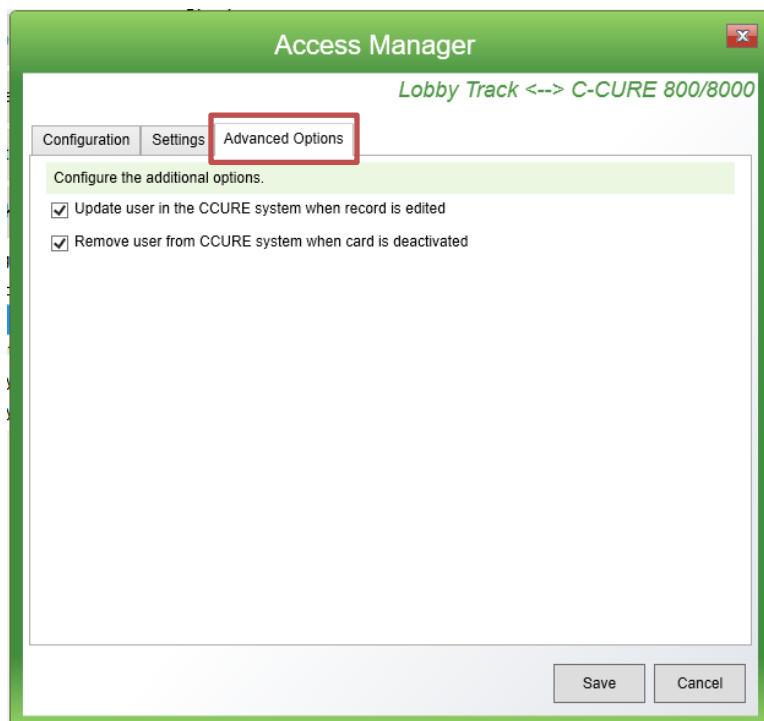
8. Open the Settings Tab



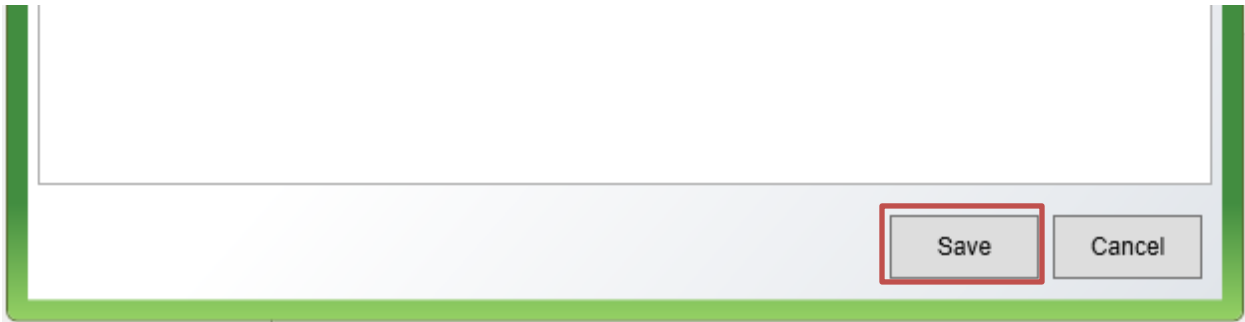
9. Map the database fields between the Jolly Technologies software and the SHI C-CURE 800 access control system



10. Edit advanced options if needed



11. Click the Save button



12. Click the OK button and return to the main screen of Lobby Track

